



Beaufort County Public Works

Stormwater Infrastructure

Project Summary

Project Summary: Wimbee Landing Road

Narrative Description of Project:

Project improved 11,368 L.F. of drainage system. Removed fallen tree from outfall ditch. Bush hogged 5,776 L.F. of roadside ditch. Cleand out 5,592 L.F. of roadside ditch. Jetted (18) driveway pipes and (1) crossline pipe.

Completion: Jun-11

2011-635 / Wimbee Landing Rd	Labor Hours	Labor Cost	Equipment Cost	Material Cost	Contractor Cost	Indirect Cost	Total Cost
AUDIT / Audit Project	3.00	\$61.44	\$0.00	\$0.00	\$0.00	\$0.00	\$61.44
CLPJT / Crossline Pipe - Jetted	4.00	\$93.12	\$88.64	\$64.10	\$0.00	\$0.00	\$245.86
DPJT / Driveway Pipe - Jetted	44.00	\$963.69	\$531.84	\$370.30	\$0.00	\$0.00	\$1,865.83
HAUL / Hauling	245.00	\$5,326.02	\$3,260.95	\$1,334.71	\$0.00	\$0.00	\$9,921.68
ODBH / Outfall ditch - bushhogged	60.00	\$1,229.10	\$148.18	\$50.34	\$0.00	\$0.00	\$1,427.62
RMTRD / Remove trees - Ditch	14.00	\$307.28	\$156.37	\$112.80	\$0.00	\$0.00	\$576.45
RSDCL / Roadside Ditch - Cleanout	288.50	\$6,425.60	\$1,129.26	\$460.45	\$0.00	\$0.00	\$8,015.30
Indirect Labor, Services and Supplies	0.00	\$0.00	\$0.00	\$0.00	\$0.00	\$9,784.92	\$9,784.92
2011-635 / Wimbee Landing Rd Sub Total	658.50	\$14,406.25	\$5,315.24	\$2,392.70	\$0.00	\$9,784.92	\$31,899.10
Grand Total	658.50	\$14,406.25	\$5,315.24	\$2,392.70	\$0.00	\$9,784.92	\$31,899.10

Before



During



After



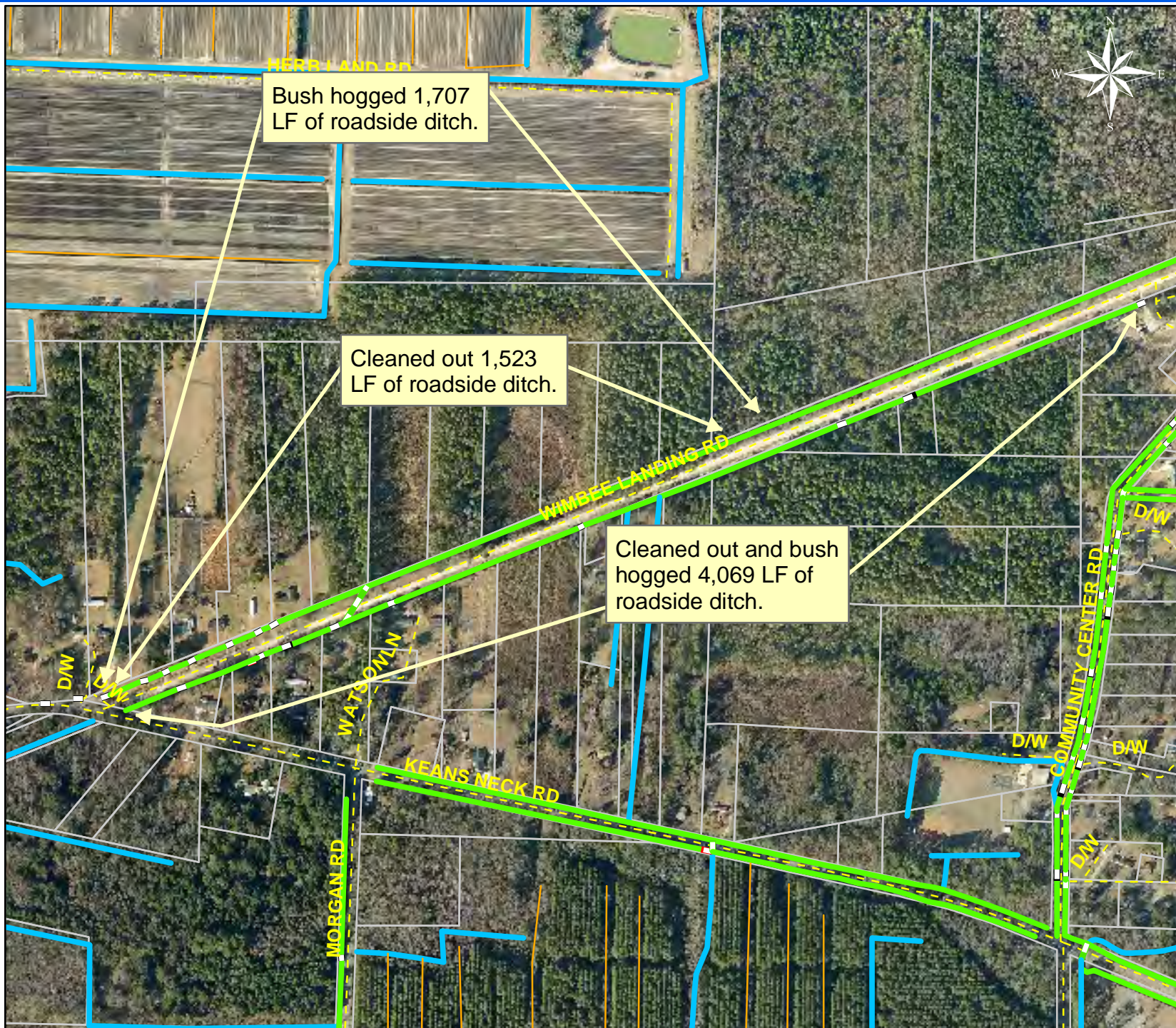
Project: Wimbee Landing Road
Map 1

Activity: Drainage Maintenance

Project #: 2011-635

Township: Sheldon

Completed: June 2011



Legend	
Drainage Type	
	River
	Stream
	Outfall
	Lateral
	Lateral Pipe
	Roadside
	Roadside Pipe
	Road Pipe
	Crossline
	D/W
	Access
	Piped
	Bleeder
	Parcels



1 inch = 518 feet

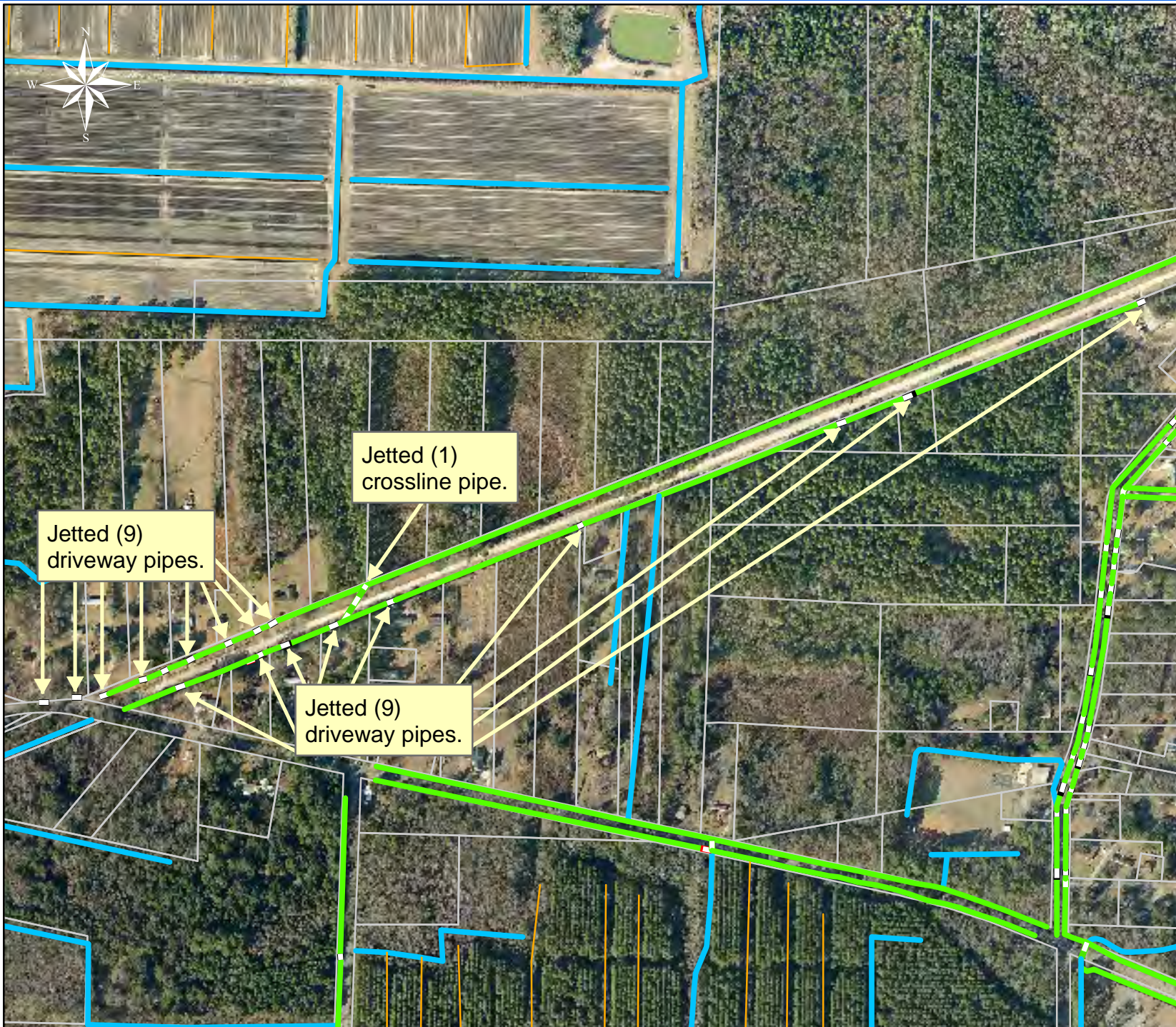
Project: Wimbee Landing Road
Map 2

Activity: Vacuum Truck

Project #: 2011-635















Township: Sheldon

Completed: June 2011



Legend

Drainage Type

-  River
-  Stream
-  Outfall
-  Lateral
-  Lateral Pipe
-  Roadside
-  Roadside Pipe
-  Road Pipe
-  Crossline
-  D/W
-  Access
-  Piped
-  Bleeder
-  Parcels

0 225 450 900 1,350 1,800 Feet

1 inch = 518 feet

Prepared By: BC Stormwater Management Utility

Date Print: 8/31/11

File:C:/sethdata/projects/projectmaps/vac/Wimbee Landing 2011-635